



SINCE 1991

Jonathan's

— P L A C E —

A safe place · A loving home · A promising future

25 Years of Your Support

Kidnet Foundation Fiscal Year 2015 Annual Report

letter from the ceo

“I am so very blessed to have the opportunity to work with and for all the amazing children that come through our doors. It is amazing how a child’s laugh, smile or hug can completely change my day. These beautiful children give me purpose, and I become a better person every day just by being in their presence.”

—Allicia Graham Frye, CEO



Support...to keep something or somebody upright or in place, or prevent something or somebody from falling; to be in favor of something, e.g. a cause, policy, or organization, and wish to see it succeed; to give active help, encouragement, or money to somebody or something; to give encouragement to somebody or something by being present at an event; and to give assistance or comfort to somebody in difficulty or distress.

I, along with the Staff, Board of Directors, Foster Care & Adoptive Parents and Volunteers, am **appreciative** of the **support** given to Jonathan’s Place over the last 25 years. Our agency fulfills our mission to provide a safe, **loving** home, and specialized services to children who have been abused, abandoned and neglected. We could not have done so without the **support** of our community. We are extremely grateful.

Fiscal year 2015 was a very busy time for our agency; we provided emergency shelter to 308

children, equaling 25,550 days in care (2,856 more than last year). It’s hard to imagine 308 children having suffered from physical and sexual abuse, abandonment and neglect, but the reality is they are out there.

Due to your **support**, we are able to provide our children with safety, shelter, food, clothing and love. Our agency is committed to going above and beyond by providing each child with everyday activities, allowing them to be just like any other child (birthday parties, prom dress shopping, preparation

“The children at Jonathan’s Place show me every day that no matter how terrible your life is or has been, someone has had it worse. Every day I see how strong these children are, especially after the trauma they’ve experienced, and if they can do it, anyone can.”

–Michael Strickland, Director of Residential Programs

“Making a difference in a child’s life feels incredible. My involvement with JP has been such a privilege because the organization is truly changing and shaping the lives of the kids for the better. This year the smiling faces, amazing costumes and contagious laughter from the kids at Halloween, as we handed out candy, made me realize how much in life we take for granted and how lucky I am to be part of such a wonderful cause.”

– Ryan Kneipper,
JP Board Member

“The children have shown me how much just showing someone you care can make a difference.”

–Hailey Wilshire, Foster Care
& Adoption Case Manager

“I am more aware that the world we live in is not perfect and there are a lot of people who suffer on a daily basis. They need our help, funding and prayers.”

–Evelyn Clark, Chief
Operations Officer

“The kids have given our family a vehicle to teach our son how to give back to the community and why it is so important.”

–Grant Baldwin, JP Board Member

“My involvement with JP has made me keenly aware of the positive and lasting impact our staff, volunteers and donors have on the kids we serve.”

–Eliot Raffkind, JP Board Member

for first dates, educational outings, etc.). Their lives do not stop because they are in a shelter or foster home.

As we begin celebrating 25 years of caring for abused and neglected children, we look back on each of you who have **supported** Jonathan’s Place along the way.

- **Supporters** who assisted Founder Lisa Matthews with fulfilling her dream to open a home for children whose mothers were suffering from drug addiction.
- **Supporting** the agency during our **Capital Campaign** that gave Jonathan’s Place a new campus in order to care for the hundreds of children who were in need of a safe and loving home.
- **Supporters** who were there for us during the lean times when the economy wasn’t doing well and the state decided to change how they placed children into emergency shelters.
- **Supporting** me, a new CEO, by providing encouragement and collaboration.

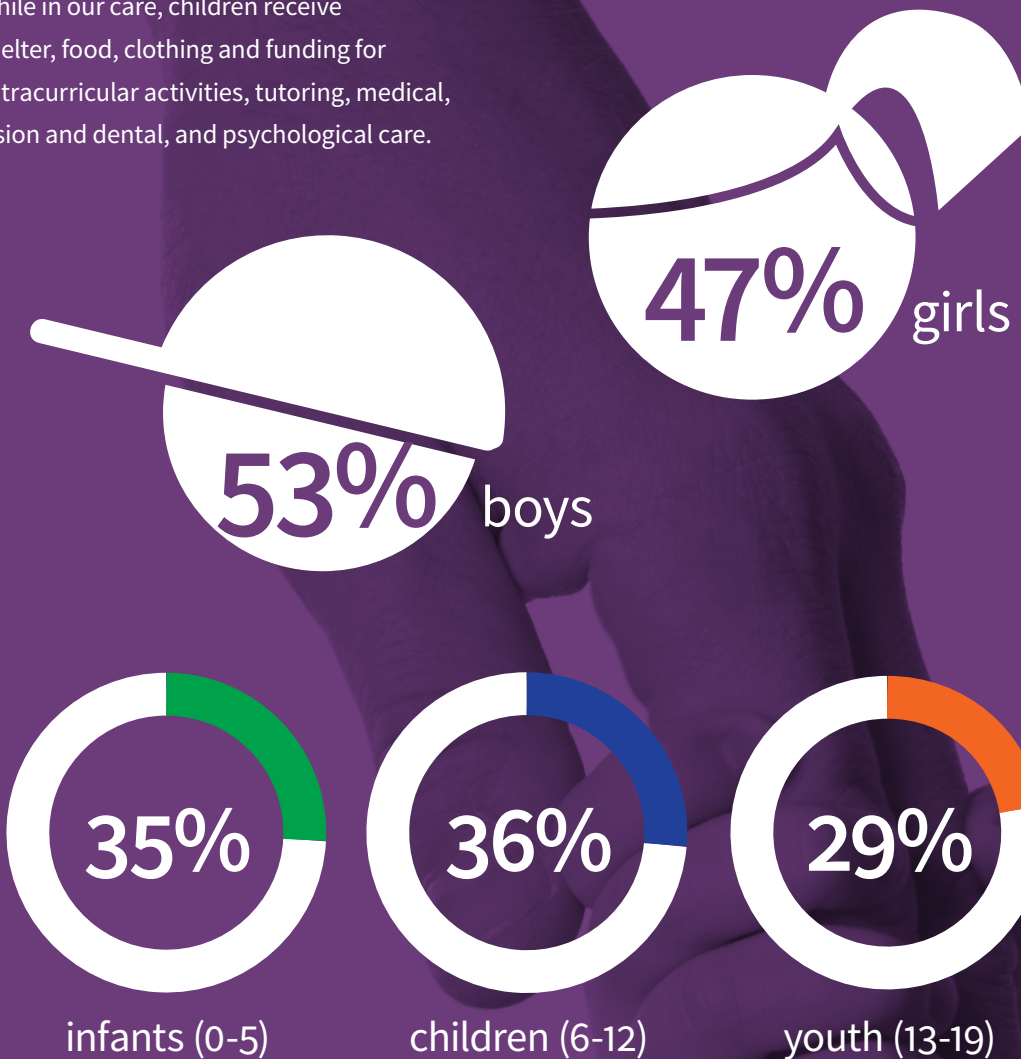
It is because of your **support** that abusive cycles have been broken, many have found their purpose and these precious children now know what it’s like to have a safe place, a loving home and a promising future.



Allicia Frye
Chief Executive Officer

who we serve...

While in our care, children receive shelter, food, clothing and funding for extracurricular activities, tutoring, medical, vision and dental, and psychological care.



2015
25,550
days in our care

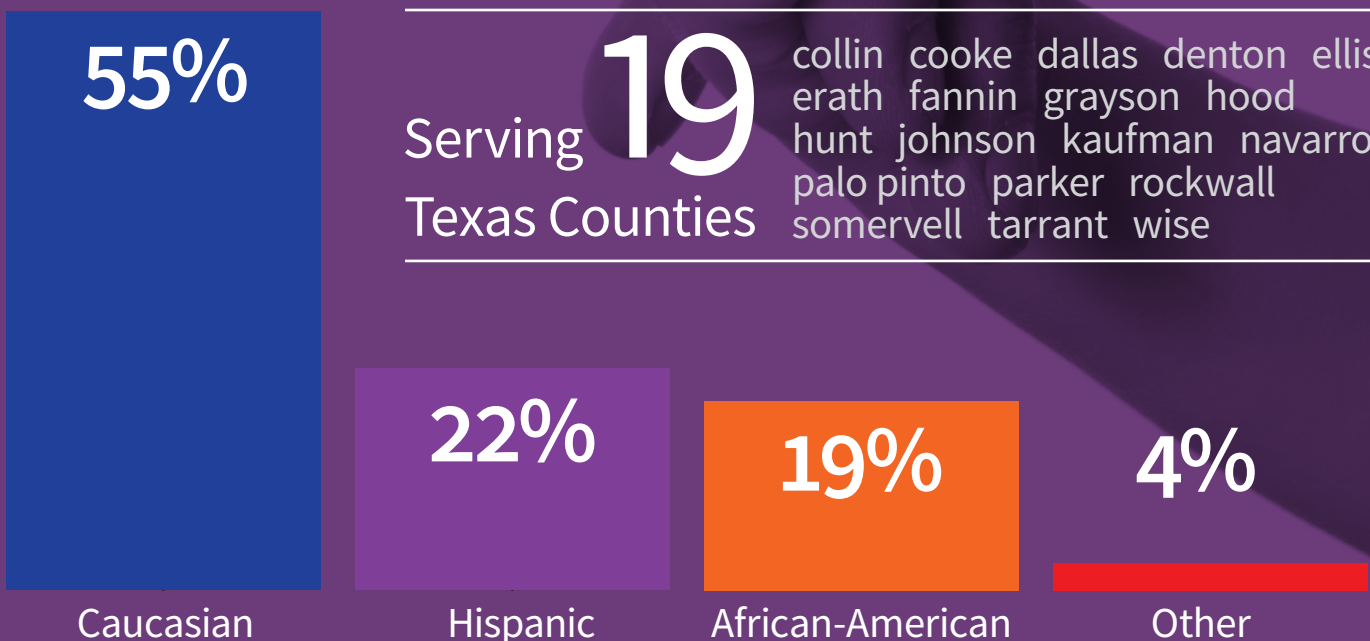
+2,856
more days
than last year

2014
22,694

2013
15,339

Serving **19** Texas Counties

collin cooke dallas denton ellis
erath fannin grayson hood
hunt johnson kaufman navarro
palo pinto parker rockwall
somervell tarrant wise



6.92% increase over last year

158 children and youth received emergency shelter

4,203 days in our care

It's hard to imagine the physical and emotional pain inflicted on an innocent child – we see these abused faces on a daily basis. It is our mission to be a safe, loving home to children who have been victims of abuse.

When a child is brought to Jonathan's Place by Child Protective Services (CPS), we can promise them a warm bed, a hot meal and a team of loving professionals to help them begin the healing process.

We are the only emergency shelter in Dallas County that accepts children ages newborn to 17. Our shelter is open 24 hours a day, 365 days a year, and we are always prepared to serve every child that comes through our doors. At Jonathan's Place, we strive to go beyond providing basic necessities and, with your continued support, we can fund a child's participation in extracurricular activities, like playing on the football team, taking guitar lessons or joining the volleyball team. Their participation in extracurricular activities helps to awaken their curiosity and open the world beyond the trauma they have experienced in their lives.



what would happen to them...

Kathy and Joey would have been separated if it wasn't for Jonathan's Place. We were able to keep the siblings together for three months until a family member could be located.

I can't imagine walking home from school and being picked up by the police, only to be told that both of your parents are dead due to a murder-suicide. Mark was only 10 years old. I'm glad we were here to comfort and protect this young boy.

After being found in a meth lab, Patty and Zane were brought to Jonathan's Place. The siblings would have been living on the streets and more than likely become drug users after being exposed to drug use by their addicted mother, who seriously neglected and later abandoned them.

if Jonathan's Place wasn't around to provide shelter, food, clothing, love...?

girls residential treatment program



their lives may not have started out easy....

Sarah came to Jonathan's Place with self-inflicted cuts on her arms, suffering from depression and low self-esteem. During her time with us she's learned how to love herself. She's gained confidence and she's no longer cutting. She now has the tools to manage her depression.

Tammy's mother was incarcerated. Due to abuse and neglect from relatives, Tammy was angry and didn't trust anyone. She acted out toward everyone when she first came to stay with us. Because of the therapeutic services we provide, she has learned how to control her anger and is becoming a well-adjusted teenager.

After suffering through sexual abuse for many years, Heather didn't respect or trust adults, and she didn't want to follow any rules. While at Jonathan's Place, she was surrounded by positive, loving adults and received individual counseling. She's made tremendous improvement in her behavior and learned to trust again.

because of Jonathan's Place, the possibilities for a brighter future are endless.

15 young girls received permanent supportive housing

2,137 days in our care

Girls that have been physically, emotionally and sexually abused face insurmountable odds of recovering from this trauma without continuous, dedicated care. Our Girls Residential Treatment Program specializes in helping girls ages 10 to 18 recover from the damages of abuse by providing love, support, guidance and emphasizing a therapeutic approach to their healing.

The young girls in our care become our daughters and we their family. We take responsibility for teaching them how to be positive young women. We ensure they have the tools they need to make good grades in school. We support them in their extracurricular activities, like attending their team volleyball games, attending band recitals, taking them shopping to pick out their prom dress and attending their high school graduation, just like a parent. Our duty is to make sure these girls are ready to pursue their dreams and become positive contributors to society.

foster care & adoption program

19,210 days in
our care

2,952 more days
than last year

53% of children in a
Jonathan's Place
foster home are
under the age of five

14 number of adoptions
finalized in FY15

135 number of children
in Jonathan's Place
foster or foster-to-
adopt home

Our Foster Care and Foster-to-Adopt program offers an opportunity for caring people to help children in need of loving homes. When a child is brought to Jonathan's Place, our goal is to find them a safe and caring home as quickly as possible. Our case managers are out in the community recruiting, training and educating families about the joys and reality of becoming a foster parent and/or adopting a child. We take pride in knowing that with our support, our foster and adoptive parents are prepared for the ups and downs of parenting, and our case managers are with them every step of the way.

due to the generosity of others...

Siblings Cate (11), Tom (8) and Evan (6), were placed in our care in November 2014 due to the death of a baby sibling in the home, parental drug use and previous CPS history. The children were eventually placed in a Jonathan's Place foster home with a family that specifically requested a large sibling group. The children entered the foster home in need of counseling, stability and love – something they never experienced before being placed with a JP foster family. This family is willing to provide care for the siblings as long as they need it.

At the age of 14, Michelle was removed from her home due to her mother running a prostitution ring, selling drugs out of the home, and allegations of neglect and sexual abuse while in her mother's custody. Since we placed Michelle in a loving and supportive foster home in August 2015, Michelle has been able to experience life as a typical teenager, focusing on athletics, friends and academics.

Luke, 4 years old, was removed from his biological mother's care in October 2014 after he brought a meth pipe to daycare and concerns arose regarding severe neglect. Luke had been removed from his home and placed in foster care previously, however, due to aggressive behavior, tantrums and urinating in inappropriate places, he was removed from this foster home as well. Shortly after, Luke was placed in a Jonathan's Place foster home where he showed few signs of the previous behaviors. Today, Luke is involved in a weekly gymnastics class, loves swimming and continues to thrive in his Jonathan's Place foster home.

our children now have loving homes.



From left to right: Tyrone White, Tyrone (White) III, Sian Miller, Briana, Tatiana, Judge Cheryl Lee Shannon.

safe place

no matter the circumstance...

At 7 years old, Aaron snuck away from home to go to the QuikTrip to buy candy. Once he arrived at the store, he panicked and realized that he didn't know his way back home, nor did he remember his home phone number. The QuikTrip employee called the Safe Place hotline to get help from Jonathan's Place. Our Safe Place manager arrived at the store and was able to get Aaron home by taking him to his school and, from there, he was able to show her exactly where he lived.

Bridgette, a young girl with two children living at home with her parents, called Safe Place to get help. After arguing with her parents and being kicked out of the home with her children, she remembered hearing about Safe Place. She called the Safe Place hotline and was able to speak with our Safe Place manager and receive the resources she needed to mend the relationship with her parents and move back into her parents' home with her children.

we will always be there.



5,562 youth attended Safe Place and runaway prevention presentations

37 Safe Place locations in Dallas County, including all QuikTrip convenience stores

4 emergency situations staff responded to at Safe Place locations

6 youth received crisis management by phone

Recognizing that one in seven young people between the ages of 10 and 18 will run away, and youth age 12 to 17 are more at risk of homelessness than adults, our Safe Place program helps teens that are scared, alone and in danger because they are trying to survive on the streets.

Safe Place is about letting our young people know they are never alone. We are a fixture in the community and schools and attend special events in order to educate teenagers and adults about the perils of running away, living on the streets and what to do if they are ever in a crisis situation. Safe Place information cards with text and hotline information are distributed to parents, students, teachers, coaches and school counselors after participating in our runaway prevention presentations.

As the Dallas County National Safe Place affiliate, we are available 24 hours a day to provide counseling, shelter and crisis intervention. All a teen has to do is text HELP to 69866 with city or zip code information and he/she will immediately receive a response with the closest Safe Place location. Safe Place works hand-in-hand with our shelter team in the event youth are unable to safely return home. Safe Place is designed to support teens in crisis. We want to help prevent youth from running away, becoming homeless and living on the streets in Dallas. Safe Place is designed to support teens in crisis before they become another statistic.

>1 in 5

young adults aging out of foster care will become homeless after age 18

71%

will be pregnant by 21, facing higher rates of unemployment, public assistance, criminal conviction and involvement in the child welfare system

1 in 4

are involved in the justice system within two years of leaving the foster care system

58%

will graduate high school by age 19, compared to 87% of all 19 year olds

<3%

will earn a college degree by age 25, compared to 28% of all 25 year olds

As our mission is to provide a continuum of care to abused, neglected and abandoned children in North Texas, it only makes sense that in 2016 we launch a Transitional Living Program for young women aging out of foster care. The Transitional Living Program will include provisions for safe housing and service components that provide for mental and physical health, education and improved well-being.

The young women will live on the Jonathan's Place campus in the Mike Modano Cottage. Young women in our program will be taught resourcefulness through hands-on learning, emphasizing the development of educational, vocational, financial, domestic and personal safety. Young women aging out of foster care deserve continued support, access to positive education and work experiences, and the opportunity to make decisions that can positively influence the outcomes of their futures. Everyone deserves and needs a support system.

transitional living program

where will they go...

A teenager with loving parents and a safe home will continue to receive support, resources and guidance from their parents throughout their lives. Adversely, thousands of youth aging out of foster care in North Texas will not receive the tools they need to successfully transition from teenager to young adult. This is why Jonathan's Place has created the Transitional Living Program.

Katherine was first removed from her biological family at age 3, which has led to an extensive history with Child Protective Services (CPS). After parental rights were terminated, Katherine was adopted, but her adoptive mother also returned her to care and relinquished her rights. After staying in numerous residential treatment centers, Katherine moved to a Jonathan's Place foster home. When she arrived, she was significantly behind academically and struggled controlling her anger, however, a credit recovery program allowed her to address her academic deficiencies. Now 18 years old, Katherine has made tremendous strides behaviorally and will complete her high school credits in February 2016. She hopes to relocate to the Jonathan's Place Transitional Living Program until she begins college in August 2016.

Hannah also has an extensive CPS history. First removed from her parents at age 4, Hannah's grandparents eventually adopted her but, when Hannah's grandfather died, she declined behaviorally and was unable to remain in the home with her grandfather's spouse. Upon returning to care, Hannah was first placed in a residential treatment center and then into a Jonathan's Place foster home when she was 16. When she arrived, she was behind academically and struggled with depression but has since completed her high school credits and is better equipped to handle her depression. Hannah hopes to relocate to the Jonathan's Place Transitional Living Program until she begins college in August 2016. Once in the program, she will have a place to call home during school breaks and holidays.

once they age out of foster care.



1994

Group Foster Home
Created

2002

Broke Ground on New
JP Campus



25

1991

Founder Lisa Matthews
established the Kidnet
Foundation
(dba Jonathan's Place)

1995

Admitted First
Children

1999

Emergency Shelter Licensed



YEARS

2008

New JP Campus Completed



2007

Adoption Program
Licensed



2013

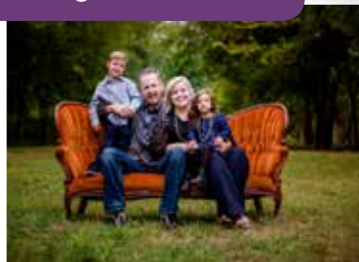
Safe Place Created

2016

February: Transitional
Living Program
Established

2006

Foster Care Program Licensed



2010

Girls Treatment Program
(GTP) Licensed



SINCE 1991

Jonathan's

— P L A C E —

A safe place · A loving home · A promising future

financials

Board of Directors

Chair
Stacey Walker

Vice Chair
Cindy Dodds

Treasurer
Tiffany Rubi

Parliamentarian
Eliot Raffkind

Secretary
Jennifer Norris

Grant Baldwin
Pam Busbee
Ted Fredericks
Andrew Gould
Melissa Jarvis
Damon Johnson
Ryan Kneipper
Marcellene Malouf
Beth Maultsby
Todd Phillips
Scott Ryan
Al Sicard
Daniel Spears
John Willingham

Executive Staff

Chief Executive Officer
Allicia Graham Frye

Founder & Strategic Advisor
Lisa Matthews

Chief Operating Officer
Evelyn Clark

Director of Development & Marketing
Mack Campbell

Director of Foster Care & Adoption
Elizabeth Lindner

Director of Residential Programs
Michael Strickland

Director of Finance & Human Resources
Esther Weiesenbach

Statement of Financial Position August 31 2015 and 2014

	FY 2015	FY 2014
Current Assets		
Cash and cash equivalents	\$1,444,847	\$820,423
Contract fees receivable	\$220,498	\$252,262
Pledges receivables	\$3,927	-
Prepaid expenses	\$23,969	\$23,667
Total Current Assets	\$1,693,241	\$1,096,352
Property, plant and equipment (net)	\$6,810,605	\$7,291,803
Investments	\$175,936	\$184,321
Other assets	\$425	\$425
Total Assets	\$8,680,207	\$8,572,901
Current Liabilities		
Accounts payable and accrued expenses	\$126,158	\$100,635
Deferred revenue	\$67,825	\$33,917
Total Current Liabilities	\$193,983	\$134,552
Net Assets		
Unrestricted	\$8,172,511	\$8,159,228
Temporarily restricted	\$224,613	\$190,021
Permanently restricted	\$89,100	\$89,100
Total Net Assets	\$8,486,224	\$8,438,349
Total Liabilities and Net Assets	\$8,680,207	\$8,572,901

Statement of Functional Expenses For the year ending August 31 2015

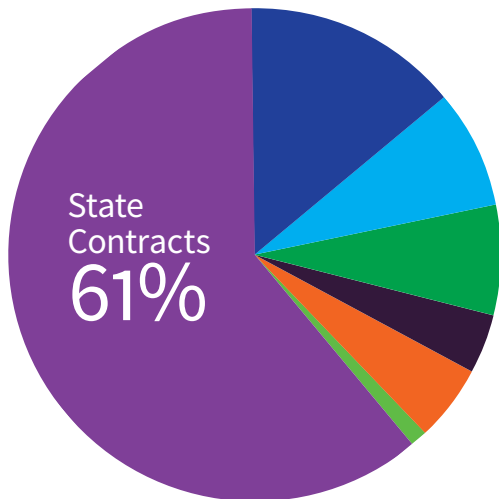
	Child Care	General	Fundraising	Total
Staffing Expense	\$1,667,972	\$93,700	\$195,160	\$1,956,832
Travel	\$33,564	\$1,080	\$4,289	\$38,933
Supplies	\$163,050	\$1,395	\$3,968	\$168,413
Occupancy	\$170,926	\$6,256	\$9,577	\$186,759
Contract Services	\$122,064	\$3,793	\$13,680	\$139,537
Other	\$116,704	\$8,149	\$14,830	\$139,683
Depreciation	\$184,028	\$12,088	\$20,465	\$216,581
Total Expense	\$2,458,308	\$126,461	\$261,969	2,846,738

Statement of Activities

For the year ending August 31, 2015

	Unrestricted	Temporarily Restricted	Permanently Restricted	Total
Support and Revenues				
Contributions and grants	\$784,499	\$94,013	-	\$878,512
Special events	\$195,321	-	-	\$195,321
Contract	\$1,787,209	-	-	\$1,787,209
Investment income, net	(483)	(7,899)	-	(8,382)
Other	\$10,036	-	-	\$10,036
Gain on sale of fixed assets	\$31,917			\$31,917
Net assets released from restrictions	\$51,522	(51,522)		-
Total Support and Revenues	\$2,860,021	\$34,592	-	\$2,894,613
Expenses				
Program services	\$2,458,308			\$2,458,308
Supporting services				
Management and general	\$126,461			\$126,461
Fund raising	\$261,969			\$261,969
Total Expenses	\$2,846,738			\$2,846,738
Change in net assets	\$13,283	\$34,592		\$47,875
Net assets, beginning of year	\$8,159,228	\$190,021	\$89,100	\$8,438,349
Net assets, end of year	\$8,172,511	\$224,613	\$89,100	\$8,486,224

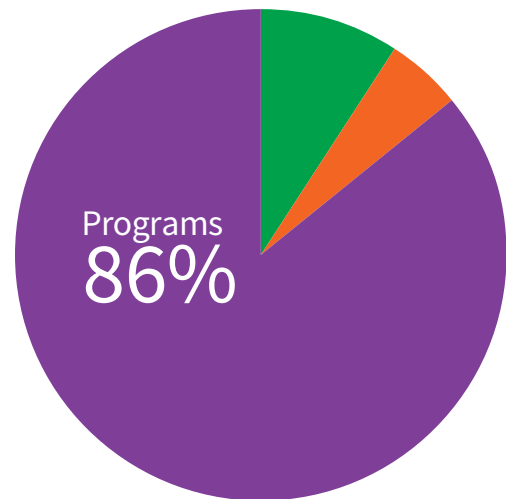
Revenues:



14% Foundations & Community Orgs
8% In Kind
7% Special Events

4% Corporate Donors
5% Individual Donors
1% Sale of Net Assets

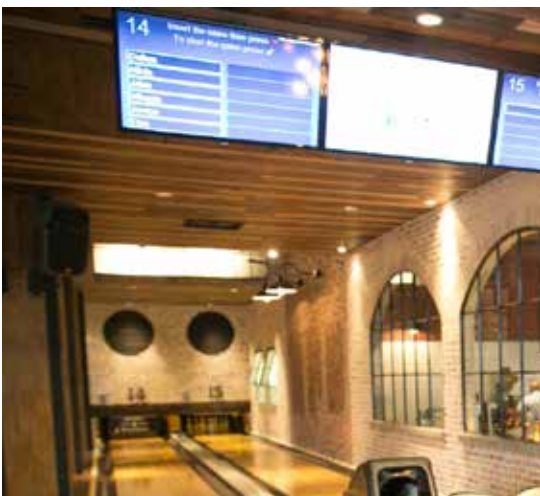
Expenses:



9% Fundraising
5% Administration

STRIKE OUT CHILD ABUSE

BOWLING FOR JONATHAN'S PLACE



Presented by



platinum sponsor

**Jennifer and
Bradley Norris**

gold sponsor

Akin Gump
STRAUSS HAUER & FELD LLP

silver sponsor

AMLI
RESIDENTIAL



Presented by



platinum underwriter

Al G. Hill, Jr

gold sponsor

Tiffany & Mark Cuban

Kay Sim

Marianne & Roger Staubach

Rachel & Brad Stephens

Stacey & Reid Walker

bronze sponsor

Akin Gump Strauss Hauer & Feld

Nancy & John Anderson

Beverly & Albert Archer

Courtney & Tom Barrow

Barbie & Bill Borlaug

Pam Busbee

Allison & John Carlisle
Detwiler, Mirza, Sudbury,
& Teegarden

Goranson Bain, PLLC
Robyn & Andrew Gould
Dr. Greta Kerwin, Psy. D.

Kerwin Testing &
Therapy Group
Marcellene Malouf &
Royal Furgeson
Susan & Matt Mattox and
Nancy & Joe Greenbach
Nationwide Insurance

Nancy Perot
Stephanie & Todd Phillips
Eliot D. Raffkind
Katherine & Eric Reeves
Jean & Jason Signor
Jennifer & Dan Spears
Starwood Motors
Mary & Mike Terry
Wild About Flowers
April & John Willingham
Helen & Gene Willingham
Amy & Mike Zicarelli



Presented by



silver sponsor

Akin Gump
STRAUSS HAUER & FELD LLP

**Jennifer and
Bradley Norris**

bronze sponsor

ANBTX Insurance Services

Architel

CWA local 6215

Montgomery Coscia Greulich LLP

Nationwide Insurance

Wick Phillips

25 YEARS



gardening



football



homework



warm beds



story time



birthday parties



reading



snowmen



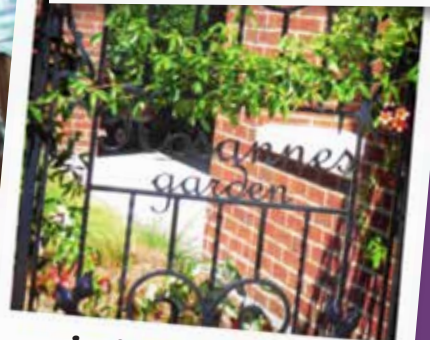
arts & crafts



dog treats



cooking class



gardening

donors

Thank you! Your gift helps provide quality care and services to abused, neglected and abandoned children in North Texas. By supporting Jonathan's Place, you make it possible for our children to have access to a safe place, a loving home and a promising future. More importantly, your donations change the lives of our community's most vulnerable children.

\$50,000+

Capital For Kids
Carl B. & Florence E. King Foundation
David M. Crowley Foundation
Harold Simmons Foundation
Mohr Partners, Inc.

\$25,000-\$49,999

Communities Foundation of Texas/North Texas Giving Day
Al G. Hill, Jr.
Rachel and Brad Stephens
Stacey and Reid Walker

\$10,000-\$24,999

Anne S. Wooslayer Foundation
Big Dreams Children's Foundation
Casa View Thrift
Charles H. Phipps Family Foundation
Dallas Stars Foundation
Mr. and Mrs. Eliot Raffkind
John R. McCune Charitable Trust
Margaret Gill Clements Napier Foundation
Jennifer and Bradley Norris
ORIX Foundation
QuikTrip Corporation
Sahm Family Foundation
Thomas M., Helen McKee and John P. Ryan Foundation
Women of Saint Michael

\$6,000-\$9,999

Akin Gump Strauss Hauer & Feld, LLP
Alpha Testing Inc.
AT&T Employee Giving Campaign
Robert Broz
Dallas Association of Health Underwriters
Dallas Cotillion
Ecolab Foundation
Element Enterprises
Macy's/Macy's Corporate Giving
Nationwide Mutual Insurance Company
The Gil and Dody Weaver Foundation
The Rees-Jones Foundation

\$3,000-\$5,999

Mr. and Mrs. Bill Blankenship
Communication Workers of America Local 6215
Tiffany and Mark Cuban
CVS Health Foundation
Dallas Junior Chamber of Commerce
Amy Detwiler
Dream Team Women's Network
E. Paul & Helen Buck Waggoner Foundation, Inc.
G&A Partners
Andrew Gould
Jed Hudson

In-N-Out Burger Foundation
J.L. Williams Foundation, Inc.
Kerwin Testing & Therapy Group
Josh Ladd
LM Aero Club
Longhorn Capital Partners, L.P.
Beth and Vance Maultsby
Mr. and Mrs. Ron Middleton
Mrs. Marcellene Malouf and Mr. William R. Furgeson
Stephanie and Todd Phillips
Quest Family Foundation
Leo & Rhea Fay Fruhman Foundation
Kay Sim
Jennifer and Dan Spears
Mr. and Mrs. Roger Staubach
The Dallas Cotillion Club, Inc.
The TJX Foundation, Inc.
Barbara and Scott Weiszhaar
April and John Willingham
Thomas M. Zicarelli

\$1,200-\$2,999

Joni Allen
America's Charities
Anonymous
John Anderson
Beverly Archer
Architel
Johna and Rick Bolka
Barbie Borlaug
Tory Burch
Pamela Busbee
Allison and John Carlisle
Conti Texas Organization Inc.
Dallas Jewish Community Foundation
Anna DeCamp
Diversion Capital Partners LLC
Enterprise Holdings Foundation
Ted Fredericks
Hein & Associates
Hitachi High Technologies America, Inc.
James Lucas
Susan Mattox
Nancy Perot
Mr. and Mrs. Roger Perry
Raythom Aviation LLC
Mr. and Mrs. Eric Reeves
Susan Riddle
Jean Signor
Joey Snelson
Southern Enterprises Inc.
Mr. and Mrs. Mike Terry
Mr. and Mrs. David Trudeau
The Barrow Family Foundation
The Pour House

\$600-\$1,199

Abstract Construction Company
ALTA-DFW
AMLI Residential

ANBTX Insurance Services, Inc.
Apex Appraisal Service
Grant Baldwin
Jon Berry
BeyondFaith Homecare & Rehab, LLC
Billy Reid, Inc.
Jim Bohlman
Theresa Bjorness
Bluesource Inc.
Tianne Booth
Von Breaux
Clarins USA
Dallas Children's Charities
Dallas-Fort Worth Metroplex CFC
Denicia Hohenberger
Eli Williams
Fidelity Brokerage Services
Fidelity Charitable Gift Fund
Cheryl Gambow
Mr. and Mrs. Randy Garrett
Jennifer and John Gates
GE United Way Campaign
Give With Liberty
Gluck Holdings, Inc.
Amber and John Grand
Hillcrest Foundation
HKS, Inc.
Hyer Preschool Association
J. M. Haggard, Jr. Family Foundation
Jack Henry & Associates
Ronah Jungerman
Junior League of Dallas, Inc.
Local Independent Charities of America
Mary Louise Ludt
LVMH
Microsoft Matching Gifts Program
Midwest Veterinary Supply
Amanda Muecke
Montgomery Coscia Greulich LLP
Mr. and Mrs. R. Scott Moran
Chris & Julie Moulas
Nametag Films
Sripavan Nattuva
Network for Good
Stacey Oellrich
Pioneer Natural Resources
Richard R. Barker Charitable Foundation
Scott Schardt
Maria Sprizzo
Jennifer Steubing
St. Michael The Archangel Catholic Church
Susie Taylor
TM Advertising
Truist
T-System
Laura and Michael Wharry
Wick Phillips, LLP
Jennifer Williamson
Vickie Wise

\$300-\$599

Lee D. Arning
Heather Asbury
Assassination City Roller Derby
ADP, LLC
Allstate Giving Campaign
Kelley Ayres
Margot Bradle
Cynthia Manning Brown
Richard Brown
Kelly Burch
Cheryl Burke
Sherri Burke
Jennifer Cawfield
Clarins Fragrance Group - Region 2 Margie Cleere
Dallas Tailgate
Rakhi and Jeet Datta
Mary Denson
Cindy W. Dodds
Howard Dudley
Kara Ellcey
Employees of Bachendorf's
Dorothy C. Feagins
FedEx Office
First Baptist Church of Rowlett
Allicia and Kevin Frye
James P. Graham
Becca Greene
Rosemary Hamilton
Andrew Hann
Mr. and Mrs. Seth Hare
Heavenly Holidays LLC
Stephen Hemphill
Hewlett-Packard, YourCause, LLC - Trustee
Highland Park Fire Department
Dana Hilton
Kristina Hopson
InFaith Community Foundation
Interparfums Luxury Brands
Joe M. & Doris R. Dealey Family Foundation
Leigh Koch
Kari Nelson
Kraft Foods Foundation
Kroger
Laddawn, Inc.
Leathernecks of North Texas
Mr. William Lepak
Mitzi Lucas
Kellen Macatee
Cheryl McDonald
Ashley McIntyre
Misti Meggs
Sam Meisner
Dave Perry-Miller
Andrew Mohr
Bob Mohr
Morgan Meyer for Texas
Nationwide Insurance Foundation
Gary Nicholes
Nootie LLC
Anabell Odisho
Stephen Olivier
Cindy Payne
Dave Perna
Elizabeth Pierce
Susan and Jon Piot
Pratt, Aycock & Associates

Presco Investments, Inc.
Puig USA, Inc.
Rebecca Richard
Mary Rooney
Roy Reis
Tiffany and John Rubi
Ryan Streiff
Sachse Cheerleaders
Safeway Inc.
Kathleen Seacat
Schwab Charitable Fund
Virginia Searcy
Beth Soltero
Sherwin-Williams Employee Association
Silver Ducks
Stephanie Sakayan
Stephanie Smith
Randee Supran
Dan Trang
Telecom Pioneers
The Dallas Foundation
The Meadows Foundation
The Mitchell L. and Miriam Lewis Barnett Charitable Trust
Ursuline Academy
Valassis Direct Mail, Inc
Nancy Vermeer
Patricia Walker
Marty Watley
Aaron Williams
Charles Williams

Bikers Against Child Abuse (BACA)
BL Restaurant Operations LLC
Brandi McComb
CBG Surveying, Inc.
Chris Westerfield
Connection Community Church
CyrusOne
Dallas Stars Foundation
Department of Public Safety- Garland
F.S. Martial Arts
Feed Our Children Now
Few Chill Designs
HCK2
Hitachi
Hoffen Foundation
In-N-Out Burger Foundation
Kellen Macatee
Kortmed Marketing and Management
Kwik Kopy Business Center
Laurie Sudbury
Pianos To Go
Professional Development Center
Redman Pomo #32 Balch Springs Late Night
Republic National Distributing Company
Sachse Cheerleaders
South and Western
Joey Snelson
TopGolf
Turbomeca USA
University Park Fire Department
Wild About Flowers

Volunteers

We were blessed to have hundreds of volunteers in FY 2015. The following individuals volunteered more than 30 hours of service to help our children.

David Acuff
Becky Balsamo
Faiza Bano
Cori Chambers
Mary Cullinan
Kaye Fagan
Dewayne Gates
Donna Gates
Maria Leach
Bud Riddel
Lindsey Riddel
Vicki Roemer
Reid Williams
Lauren Wilson
Abebiye Woldemichael

In Kind Donors

So much of what we do depends on the generosity and kindness of others. We appreciate our donors who provided items, expertise and supplies totaling \$109,413.

\$20,000+

Junior League of Dallas, Inc.

\$1,000 - \$19,999

AMLI
Heather Asbury
American Airlines Flight Academy Employee Association
BeyondFaith Homecare & Rehab, LLC

\$500-\$999

Tory Burch
Carrol Company
Charme/Community Group
Church Of Jesus Christ Of Latter-Day Saints (Wylie 3rd Ward)
Wendy Krispin Caterer
Dallas BOMA Education Institute
David S. Irvin, The Portrait Photographer
Deloitte Tax LLP
Drain/Stringfellow Life Group
Exterior Images
Geico Diversity Committee
Kristen Graves
Ann Hicks
Hyer Preschool Association
Ashley Nicoll Maddox
McKinsey & Company
Mobilize Dallas
Morgan & Weisbrod
New Benefits
Pat Conroy
Random Act of Kindness
David Reinert
Richardson Young Adults
Susan Riddle
Shiseido
Starwood Motors
TCJ Ventures
The Village Church Homegroup
VIP Search Group
Barbara B. Weiszhaar
XL Group

For questions about your giving, or how to become involved, contact Jonathan's Place at 972-303-5303 ext. 212.

2016 Events

January

25th Anniversary
Reception

January 28, 2016

February

Strike Out Child
Abuse Bowling
Tournament

February 27, 2016
Bowl and Barrel, Dallas

March

Pep Rally & New
Logo Reveal

March 3, 2016
Jonathan's Place Campus

April

A Chance to Soar
Luncheon

April 26, 2016
Dallas Country Club

May

JP's Fun, Food
and Friends Family
Picnic

May 21, 2016
Jonathan's Place Campus

June

BACA Road Rally
for Kids

Planning in progress!

July

Classic Car Show

July 21, 2016
Sam Pack's Car Museum

August

JP Lego
Competition

Launch on August 1, 2016

September

3rd Annual Mohr
Partners Golf
Classic

September 22, 2016
TopGolf Dallas

October

Jonathan's Place
Birthday Party

Planning in progress!
Klyde Warren Park

November

Here's To You –
Wine Tasting

November 8, 2016
Bishop Arts District

December

25th Anniversary
Celebration

December 6, 2016
Trinity Grove

Jonathan's Place

P.O. Box 140085
Dallas, TX 75214

Ph. (972) 303-5303
Fax (972) 303 5346

jpkids.org

